



8<sup>th</sup> Grade  
Curriculum Night  
March 1, 2017

Informational Packet

# **The Mission Statement of Beverly High School**

The mission of Beverly High School is to provide a safe, respectful environment in which all students are challenged to reach their academic and social potential.

## **Beverly High School Academic Expectations**

Beverly High School students will:

- Communicate clearly through a variety of media.
- Read, understand, and interpret materials.
- Apply a variety of problem-solving skills.
- Obtain, evaluate, analyze, and apply data.
- Pursue and participate in modes of artistic and creative expression.

## **Beverly High School Social/Civic Expectations**

Beverly High School students will:

- Practice responsible citizenship
- Respect self and others
- Accept responsibility
- Work cooperatively

# Beverly High School

School Profile  
2016-2017



100 Sohier Road  
Beverly, MA 01915

Phone: 978-921-6132

Fax: 978-921-9460

Guidance Fax: 978-921-8537

## Administration:

Elizabeth Taylor, Interim Principal

Mark Thomas, Asst. Principal

Jennifer DeStefano, Asst. Principal

Julie Angelo, Interim Asst. Principal

## Guidance Counselors:

Melinda Loosian, Facilitator ext 108

Michelle Burke, ext. 107

Danielle DiCarlo, ext. 106

Tina Grasso, ext. 105

Jessica Bushee, ext. 110

Lori Spurvey, Registrar, ext. 103

Eillen Perry, Secretary, ext. 102

Beverly High School is a four-year public high school enrolling approximately 1300 students in 2016-2017, including 338 seniors. Accreditation is through the New England Association of Schools and Colleges and the Massachusetts Department of Elementary and Secondary Education.

## Mission Statement:

The mission of Beverly High School is to provide a safe, respectful environment in which all students are challenged to reach their academic and social potential.

## Curriculum:

Levels represent the different academic standards offered in courses: Advanced Placement/Honors, College Preparatory and Unleveled. AP and Honors are the most challenging courses. College preparatory courses are designed to prepare students for higher education or technical schools. Courses without the designation of CP/Honors/AP are not counted when calculating GPA. Beverly High School operates on a 4x4 Block Schedule. All courses are 83 minutes and are on alternating day schedule.

## Graduation Requirements: 140 Total Credits

English	20.0 credits
Mathematics	20.0 credits
Science	17.5 credits
Social Studies	17.5 credits
World Language	10.0 credits
Fine Arts	5.0 credits
Wellness	7.5 credits
Computer Proficiency	2.5 credits

Students must pass a course with a D (63). Failing grades are entered on transcript and included in GPA calculations even if the course was repeated or taken in summer school.

## Profile of the Class of 2017

**Class Size:** 338 Students

**Highest GPA in the class:** 4.76 on a 4.0 scale, weighted

**Midpoint GPA in the class:** 3.24 on a 4.0 scale, weighted

## Class of 2016

**Class size:** 321 Graduates

Pursuing Higher Education: 91%

4-year College: 64%

2-year College: 23%

Other Schooling: 4%

Employment: 4%

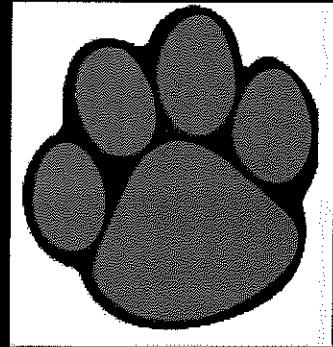
Armed Services: 1%

Average SAT Scores	CR	Math	Writing
Beverly Students	518	523	511
Beverly Students also took SAT subj tests	575	599	571
Massachusetts	517	530	506
National	494	508	482

Average ACT Scores	Eng	Math	Read	Sci	Comp
Beverly Students	23.3	24.4	24.6	23.7	24.1
Massachusetts	24.4	24.9	25.3	24.1	24.8

\*Score averages reflect the highest score of all tests taken.

Grade	CP	Honors	AP
A+	4.3	4.8	5.3
A	4	4.5	5
A-	3.7	4.2	4.7
B+	3.3	3.8	4.3
B	3	3.5	4
B-	2.7	3.2	3.7
C+	2.3	2.8	3.3
C	2	2.5	3
C-	1.7	2.2	2.7
D+	1.3	1.8	2.3
D	1	1.5	2
F	0	0	0



### 2016 AP Statistics

AP Tests Administered	362
AP Courses	11
AP Exam Scores 3+	64%
Perfect AP Scores (5)	44
AP Scholars	46

### 2017 National Merit Scholarship Eligible Students

2 Commended students

### News of Notable Accomplishments

Each year, our students and faculty members are proud to announce our program achievements and accomplishments. Our students are proud to have earned awards, such as the National Merit Scholarship, and our faculty members are proud to have received awards and recognition. We are proud to have a strong record of achievement and to have our students and faculty members recognized for their accomplishments. We are proud to have a strong record of achievement and to have our students and faculty members recognized for their accomplishments.

## **Beverly High School Staff**

978-921-6132

### **Principal**

**Mrs. Elizabeth Taylor, ext. 11179**

Lora Bassett, Secretary, ext. 11191

Annie Matney, Secretary, ext. 11193

**btaylor@beverlyschools.org**

lbassett@beverlyschools.org

amatney@beverlyschools.org

### **Assistant Principals**

**Mr. Mark Thomas, ext. 11252**

Laurie Megrath, Secretary, ext. 11250

**mthomas@beverlyschools.org**

lmegrath@beverlyschools.org

**Ms. Julie Angelo, ext. 11444**

Andrea Burgess, Secretary, ext. 11442

**jangelo@beverlyschools.org**

aburgess@beverlyschools.org

**Ms. Jennifer DeStefano, ext. 11343**

Mary Morency, Secretary, ext. 11341

**jdestafano@beverlyschools.org**

mmorency@beverlyschools.org

### **Beverly High School Guidance Staff**

Ms. Jessica Bushee, ext. 11110

Ms. Michelle Burke, ext. 11107

Ms. Danielle DiCarlo, ext. 11106

Ms. Tina Grasso, ext. 11105 (Equity Coordinator)

Ms. Melinda Loosian, ext. 11108

**jbushee@beverlyschools.org**

**mburke@beverlyschools.org**

**ddicarlo@beverlyschools.org**

**tgrasso@beverlyschools.org**

**mloosian@beverlyschools.org**

### **Guidance Department Secretarial Staff**

Lori Quill, ext. 11103

Eileen Perry, ext. 11102

**iquill@beverlyschools.org**

**eperry@beverlyschools.org**

### **Adjustment Counselors**

Ms. Heather Matulewicz, ext. 11402

Ms. Helen Gorman, ext. 11114 (Equity Coordinator)

Ms. Kendra Stinson, ext. 11115

**hmatulewicz@beverlyschools.org**

**hgorman@beverlyschools.org**

**kstinson@beverlyschools.org**

### **Nurse**

Ms. Kim Pappas, ext. 11126

**kpappas@beverlyschools.org**

## **BHS FRESHMAN ACADEMY**

### **STATEMENT OF PURPOSE:**

The purpose of the Freshman Academy is to provide a team approach to assist students as they successfully transition into high school. Teachers and students will develop positive, respectful relationships which will facilitate academically confident, self-sufficient, motivated learners who meet the expectations of the Beverly High School mission statement.

### **Goals for the Freshman Academy**

1. To increase the freshman academic achievement rate, especially for low income and special education students.
2. To create an accessible curriculum and climate of respect among students and teachers through personalized learning.
3. To set clear behavioral and academic expectations to help freshman transition into the high school culture and rigor.

#### **BRUINS**

E. Lincoln- English  
L. Woodcock- Math  
P. Dupray- Science  
P. Henebury- Social Studies  
M. Smith- Special Education

#### **PATRIOTS**

M. Bigus- English  
E. Dalton- Math  
S. LaRochelle- Science  
P. Casey- Social Studies  
G. Parsons- Special Education

#### **CELTICS**

K. Martin-English  
S. Belliveau- Math  
P. Regan- Science  
J. Pynchon- Social Studies  
C. Thompson- Special Education

#### **RED SOX**

L. Collins- English  
B. Bisceglia- Math  
R. Epie- Science  
J. Riley- Social Studies  
G. Lamothe-Special Education

#### **REVOLUTION**

T. Guzzio- English  
G. Parsons- Math  
R. Epie - Science  
M. Smith- Social Studies

## Scheduling Information & Dates

### Important Information for Private School Students and Parents

- Registration packets for private middle school students will be available online at [www.bhsonline.org](http://www.bhsonline.org), under Guidance/Registration. Parents can complete the packet in its entirety and either return it in person, in the mail, by fax at 978-921-8537, or by scanning and emailing it to [ispurvey@beverlyschools.org](mailto:ispurvey@beverlyschools.org). Once the completed packet is returned complete, Mrs. Lori Quill, Registrar, will contact you to set up an appointment with a Guidance Counselor to request courses, review curriculum and answer any questions you may have. These appointments will be scheduled between March 20 and April 13. Freshman schedules (for all grade 9 students) are created in May and are mailed home in the summer. Mrs. Quill can also be reached at 978-921-6132 ext. 11103, or at the above email address with questions.
- **8<sup>th</sup> Grade Move-Up Day** will tentatively be held on Tuesday, June 13, 2017. Students are invited to visit BHS on that day for a tour and an information session, for approximately 2 hours. If you would like your child to attend, please contact Ms. Melinda Loosian at [mloosian@beverlyschools.org](mailto:mloosian@beverlyschools.org), *after April Vacation*.

### Important Information for Briscoe Students and Parents

- The course selection and registration process for 8<sup>th</sup> grade students at Briscoe has already begun. Foreign Language, English, Math, Social Studies and Science teachers at Briscoe are currently completing the Course Recommendation Forms for what level courses your child should take next year at BHS.
- On March 1 & 2 the BHS Guidance Counselors will be visiting 8<sup>th</sup> graders in their homerooms to hand out the Course Recommendation/Selection Forms and to help them pick electives available to 9<sup>th</sup> graders. An explanation of the BHS 9<sup>th</sup> grade curriculum, course schedule, and available clubs, activities and sports will also be given at that time. Students will bring the Course Recommendation/Selection Sheet home for your signature, ***which must be returned to your child's homeroom teacher by Monday, March 6.***
- 8<sup>th</sup> Grade Move-Up Day will tentatively be held on Tuesday, June 13, 2016. Students are invited to visit BHS on that day for a tour and an information session, for approximately 2 hours. If you would like your child to attend, please contact Ms. Melinda Loosian at [mloosian@beverlyschools.org](mailto:mloosian@beverlyschools.org), *after April Vacation*.

### FOR ALL INCOMING 9TH GRADERS:

- Summer Reading is required for English classes. Please visit [www.bhsonline.org](http://www.bhsonline.org) for summer reading information or contact our Librarian, Mrs. Fecteau, at [bfecteau@beverlyschools.org](mailto:bfecteau@beverlyschools.org) if you have further questions.
- A schedule of classes will be mailed home over the summer. If you have any questions at that time, please contact Mrs. Lori Quill, Guidance Secretary, extension 11103 to make an appointment with your child's Guidance Counselor over the summer if there is an error in your child's schedule. On behalf of the Guidance Department, we want to wish you a happy, healthy and successful remainder of the school year. We look forward to working with you and your family in the coming years at Beverly High School!

## Sample 9<sup>th</sup> Grade Schedules

	<b>Day 1 - Panther</b>		<b>Day 2 - Pride</b>
<b>A</b>	CP English 9	<b>A</b>	CP Spanish 1
<b>B</b>	CP Biology	<b>B</b>	Health Development/ Foundations of Sport
<b>C</b>	Band	<b>C</b>	CP World History 9
<b>D</b>	CP Algebra 1	<b>D</b>	Intro to Media and Computer Science

	<b>Day 1 - Panther</b>		<b>Day 2 - Pride</b>
<b>A</b>	Health Development/ Foundations of Sport	<b>A</b>	Hon French 3
<b>B</b>	Hon Biology	<b>B</b>	Honors English 9
<b>C</b>	Honors World History 9	<b>C</b>	S1: Culinary Arts S2: Art Foundations
<b>D</b>	Hon Algebra 2	<b>D</b>	Intro to Media and Computer Science

---

**Please Note:**

- ✓ All students must register for 40 credits.
- ✓ All classes meet for 84 minute blocks.
- ✓ Classes will meet every other day.
- ✓ 5.0 credit courses including all major subjects, and some electives are year long courses.
- ✓ 2.5 credits courses are semester-long courses.



## Beverly High School - 2017-2018 Course Selection Form Grade 9 – Class of 2021

**Student Name:** \_\_\_\_\_ **Parent Signature:** \_\_\_\_\_

**PARENTS:** Please review this course request form carefully, including teacher recommendations and electives, prior to signing and returning the form. If you have questions regarding placement recommendations, please contact your child's teacher. **Students must choose 40 credits. Courses will be chosen for you if spaces are left blank. THIS FORM IS DUE, SIGNED BY PARENT, BY MONDAY, MARCH 6, TO YOUR CHILD'S HOMEROOM TEACHER.** Thank you for your assistance.

Department	Course Name	Course #	Level	Credits	Teacher's initials
<b>English</b>	English 9		Honors 100	5	
			CP 101		
<b>Social Studies</b>	World History 9		Honors 200	5	
			CP 201		
<b>Mathematics</b>	Algebra 1		Honors 310	5	
			CP 312		
	Algebra 2	Honors 320			
<b>RTI Math 9</b>	Additional Math Support		Unleveled 395	5	
<b>Science</b>	Biology		Honors 412	5	
			CP 413		
<b>World Language</b>	French		CP French 1 500	5	
			CP French 2 502		
			Honors French 2 503		
			Honors French 3 505		
	Spanish		CP Spanish 1 540		
			CP Spanish 2 542		
			Honors Spanish 2 543		
	German		Honors Spanish 3 547		
			CP German 1 520		
	American Sign Language		CP German 2 522		
			Honors German 2 523		
			Honors German 3 525		
			CP ASL 1 569		
<b>Wellness</b>	Health Development/ Foundations of Sport	900		5	
<b>Computer Tech</b>	Intro to Media & Computer Science	722		5	
<b>Elective #1</b>					
<b>Elective #2</b>					

**Total Credits - 40 (MAX)**

**\*\*Please see reverse side for a list of electives open to 9<sup>th</sup> graders**

**Year-Long Electives: CHOOSE ONE, IF INTERESTED, and write under “Elective 1”.**

Band/Chorus	608	Year long elective, split between Band and Chorus every other day.	5
Band	606	This group consists of the standard concert and marching band instrumentation.	5
Chorus	602	Students develop skills and interests in vocal music from classics to pop.	5
Concertquaire	609	Designed for students who would like to perform music of a more challenging nature.	5
String Ensemble	612	Designed for musicians with a strong passion for playing strings instruments/orchestra.	5
MJROTC 1	O83	Development of informed and responsible citizens, by building character and leadership skills.	5

**If you did not select a Year-Long elective above, choose TWO of the elective options below, and write under “Elective 1” and “Elective 2.” \*\*Your schedule may/may not be able to accommodate your preferences, however your requests will be made. Any of these electives may be scheduled if they fit best with your required courses.**

Art Foundation	640	Intro to Visual Art, both 2 and 3 dimensional	2.5
Culinary Arts	930	Basic food preparation skills, techniques and nutrition.	2.5
Lifetime Fitness	910	Maintaining an active lifestyle in the years during and after high school. Activities include: badminton, golf, pickie ball, power walking, racquetball, orienteering, tennis, weight training, yoga, and Zumba.	2.5
Creative Writing	152	Focus on various forms of creative writing such as poetry, short stories, plays, journals, etc.	2.5
History of Rock Music 1	618	Students will explore the evolution of music and emphasis will be placed on sociological cause and effect of musical development over time.	2.5
Leadership 101	089	Fundamentals of leadership, ethical standards, goal setting, current events	2.5
Intro to Piano	616	Beginners piano, basics of piano music notation	2.5
Guitar 1	615	Open to beginners, must provide own guitar	2.5



**BEVERLY HIGH SCHOOL**

**Elizabeth Taylor**  
*Interim Principal*  
[btaylor@beverlyschools.org](mailto:btaylor@beverlyschools.org)

100 Sohier Road  
Beverly, Massachusetts 01915  
Telephone (978) 921-6132  
Fax (978) 927-9460

**Mark Thomas, Assistant Principal**  
[mthomas@beverlyschools.org](mailto:mthomas@beverlyschools.org)  
**Jennifer DeStefano, Assistant Principal**  
[jdestefano@beverlyschools.org](mailto:jdestefano@beverlyschools.org)  
**Julie Angelo, Interim Assistant Principal**  
[jangelo@beverlyschools.org](mailto:jangelo@beverlyschools.org)

**VISITOR SHADOW REQUEST FORM**

Please return form to Lori Quill in the Guidance Department, or email to [lquill@beverlyschools.org](mailto:lquill@beverlyschools.org)

Student Name: \_\_\_\_\_

Address: \_\_\_\_\_

Preferred Date requested: \_\_\_\_\_

**(NO APPROVAL for Fridays or testing days, regular schools day only)**

**Emergency Contact Information:**

**Parent/Guardian Name and Telephone Number:**

Medical issues:

**Signature of Parent/Guardian:** \_\_\_\_\_

Current School and Phone Number \_\_\_\_\_

Reason for Visit: \_\_\_\_\_

Student Grade: \_\_\_\_\_

Requested/assigned Student Host: \_\_\_\_\_

Interests of the student

**Principal Approval:** \_\_\_\_\_

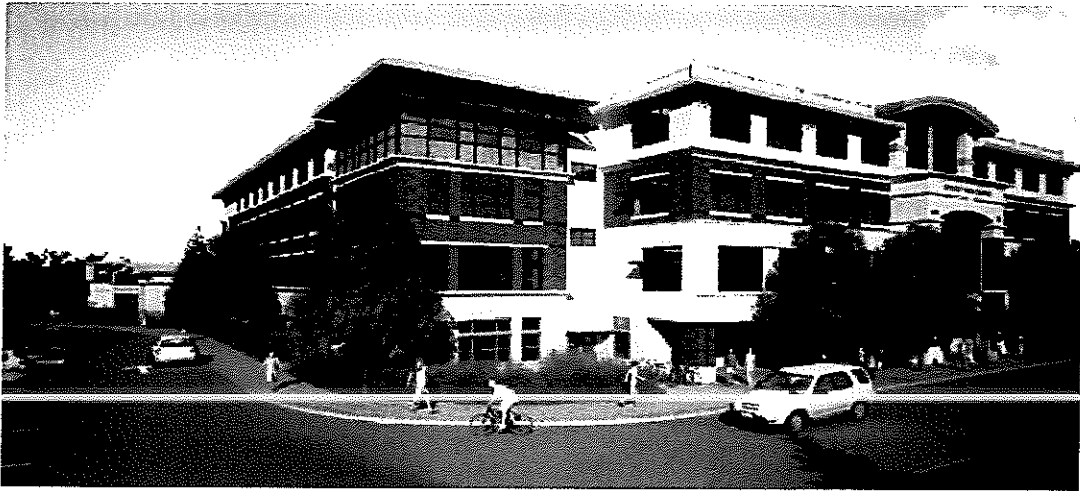
**Check in at the guidance office and meet your host student by 8:00am. Bring lunch or lunch money \$3.00-\$4.00**

**School begins at 8:15am  
School ends at 2:33pm**

**NOTICE OF NONDISCRIMINATION**

All educational and non-academic programs, activities and employment opportunities at Beverly Public Schools are offered without regard to race, color, sex, religion, national origin, ethnicity, sexual orientation, gender identity, homelessness, age and/or disability, and any other class or characteristic protected by law.

# **BHS Welcomes The Class of 2021 for**



## **8th Grade Move Up Day! Tentatively scheduled for Tuesday, June 13, 2017 9am-10:45am**

The Beverly High School community would like to welcome our students, the Class of 2021, to visit BHS on Tuesday, June 13th from 9am to 10:45am.

BHS students will lead small group tours and answer questions, starting from the BHS Auditorium. If your student is coming from private school or transferring as a new student, please email Melinda Loosian, Guidance Counselor, at [mloosian@beverlyschools.org](mailto:mloosian@beverlyschools.org) to register for Move Up Day by Monday May 22, 2017. Students will meet in the auditorium around 9am and will be done by 10:45.



## *Beverly High School* *Home of the Panthers*

Athletic Director: Dan Keefe  
Secretary: Linda Zambouras  
Athletic Trainer: Charla Bouranis  
Strength Coach: Ben Goodhue

[dkeefe@beverlyschools.org](mailto:dkeefe@beverlyschools.org)  
[lzambouras@beverlyschools.org](mailto:lzambouras@beverlyschools.org)  
[cbouranis@beverlyschools.org](mailto:cbouranis@beverlyschools.org)  
[morency.andrew@gmail.com](mailto:morency.andrew@gmail.com)

### Interscholastic Athletics

Beverly High School has a strong tradition in athletics. Students are encouraged to participate in athletics in each of the three seasons in which they are offered. We offer varsity, junior varsity and freshman programs for nearly every sport. We also offer middle school cross country and spring track. **All student/athletes who try-out for a sports team MUST attend ALL try-outs for consideration to a team!**

#### Fall Season

Cheerleading  
Boys X-Country  
Girls X-Country  
Field Hockey  
Football  
Golf  
Boys Soccer  
Girls Soccer  
Volleyball  
Middle School X-Country

#### Winter Season

Boys Basketball  
Girls Basketball  
Gymnastics  
Boys Ice Hockey  
Girls Ice Hockey  
Boys Indoor Track  
Girls Indoor Track  
Swimming/Diving  
Wrestling (\$260)

#### Spring Season

Baseball  
Softball  
Boys Lacrosse  
Girls Lacrosse  
Boys Outdoor Track  
Girls Outdoor Track  
Boys Tennis  
Girls Tennis  
Sailing  
M.S. Spring Track  
Ultimate Frisbee

Fall Try-Outs usually begin the 2nd Thursday **BEFORE** Labor Day  
Winter Try-Outs begin the first Monday **AFTER** Thanksgiving  
Spring Try-outs begin the **3rd Monday** in March

### **Recent Team Accomplishments:**

- Gymnastics – 2012 Finished 4<sup>th</sup> in New England Championships
- Girls Soccer – 2012 Division 1 North Sectional Champions
- Boys Lacrosse – 2015, 2014 Division 2 North Champions
- Football – 2012 Division 2A Super Bowl Champions 2010 Division 3 Super Bowl Champions
- Baseball – 2015 Division 2 North Finalist, 2012 North Sectional Finalist
- Swimming - 2014 - Astrid Swensen, 100 Butterfly State Champion
- Boys Ice Hockey – 2014 Division 2 State Champions
- Creation of school wide strength & conditioning program

**Follow us on twitter: @BeverlyPanthers**

**Visit our blog: [www.beverlyathletics.blogspot.com](http://www.beverlyathletics.blogspot.com)**



**BHS Grade 8 Parent Night**  
**BHS 1-1 Learning Program Information**  
March 2017

**Program Goal:** To increase student engagement and achievement in a 21<sup>st</sup> century teaching and learning environment.

**Program Objectives:**

- Partner with parents to provide a valuable learning tool for your students.
- Create a sustainable model for keeping BHS up to date with technology.
- Provide options for students who choose not to participate (this is not required).
- Offer financial assistance to families in need.

**Program Overview:**

- School district implementing a financial acquisition program with Apple.
- Parents/students pay a fee to participate in the program.
- Financial assistance will be available (see other side for more information).
- Loaner laptops available for non-participants.

**The Program Fee will include:**

- Macbook Laptop & Case
- Academic Software
- Software Updates
- Insurance
- Maintenance
- Warranty
- Tech Support @ BHS.

**Program Costs (final cost will be determined by early April)**

- Program will cost approximately \$320 - \$350 each year for 4 years.
- How payment will breakdown each year:
  - Payment 1: May 15<sup>th</sup> - 1/2 of yearly cost.
  - Payment 2: August BHS registration: ½ of remaining balance
  - Payment 3: October 15 (in Full)
- After 4 years students can purchase their laptop for \$1 plus sales tax.

**Student Use of Laptop**

- Use 24/7 in school, at home, or wherever.
- Can install their own applications but must abide by BHS Acceptable Use Policy when in school.
- BHS Tech Support is for academic programs only.

## Common Questions and Answers:

What if.....

### Q. You leave BHS before 4 years?

A. You have the option to buy the laptop by paying the remaining balance on the principal of the lease, plus sales tax or return the laptop, charger, and case to the school in very good working condition.

### Q. You need financial assistance?

A. Financial aid forms are available at the district business office, BHS Tech Center, and the BHS 1-1 Laptop Initiative web site. ([www.BHSONline.org](http://www.BHSONline.org)). You need to provide supporting documentation with your application and reapply each year. Applications are due the end of March 2017. If you have any questions about the scholarship process please call Stephanie Walters at 978-921-6100 ext. 21726

### Q. What if I miss the registration deadline in May?

A. We cannot guarantee that you will be able to lease a laptop for the upcoming school year.

### Q. You want to use or purchase your own laptop?

A.

- You should consider that, thus far, BHS program prices have been lower than retail prices and the lease program includes all software, insurance and a 4 year warranty. Retail stores do not offer these benefits
- Laptop must meet minimum specifications to work @BHS e.g. Macbook with specified OS, RAM and storage
- You will need to purchase any district licensed educational software needed, e.g. you could spend between \$30 and \$400 for some software packages.
- You will need to purchase insurance if desired, school is not liable.

### Q. You don't want to participate?

A. There will be loaner laptops available for class use only for students who do not have their own laptop.

### Next Steps:

- Official information/registration packet out in early April of 2017
- First payment due Monday, May 15<sup>th</sup> 2017.

### For More Information:

[www.beverlyschools.org](http://www.beverlyschools.org) (click on 1-1 Learning Initiative)

Call the BHS Tech Center 978-921-6132 X11171

Email:

Judy Miller, District Technology Director [jmiller@beverlyschools.org](mailto:jmiller@beverlyschools.org) or

Alice Williams, BHS Tech Center Coordinator [awilliams@beverlyschools.org](mailto:awilliams@beverlyschools.org)